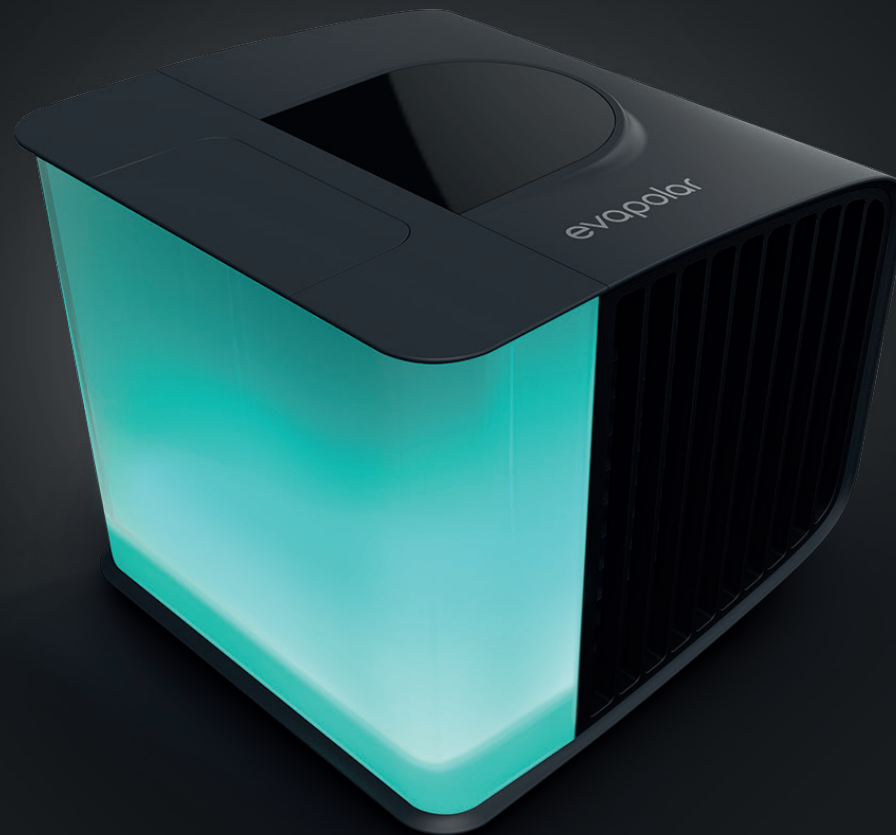


evapolar

evaSMART™

REVIEWER'S GUIDE

Who we are and what we stand for	2
What are Evapolar Air Conditioners?	3
How do Evapolar Air Conditioners work?	4
Our patented EvaBreeze™ material	5
World's first smart personal air conditioner	6
Key features evaSMART™	7
Smart Home & cartridge usage	8
Mobile application	9
Stylish interior accessory	10
Evapolar product lines	11
Contacts	12



WHO WE ARE

and what we stand for

Evapolar is an international manufacturer of personal microclimate solutions.

We founded the company in 2015 to challenge the AC industry by addressing the question of whether it is necessary to cool a whole room and waste huge amounts of energy and money just to cool yourself, or better to create your personal cool zone exactly where you need it. Evapolar solutions are designed to show the benefits of a personal microclimate.

Right now, people in 125 different countries are experiencing these benefits and have Evapolar Air Conditioners for their own environments. Our channel partner network is constantly growing across the globe. We are moving forward to share our Personal Microclimate concept to more individuals and to spread this idea around the world to make everyone's life a little easier and cooler.



What are EVAPOLAR AIR CONDITIONERS?

Everyone is unique and has their own preferred temperature, comfort level and tolerance for air quality and allergens. Without a personal solution, people have had to either negotiate a change in their environments, or suffer through inferior conditions. Our core products create a personal comfort zone where the user needs it most.

With Evapolar, you personalise the environment around you by cooling and humidifying the air. You can adjust the temperature and the humidity level to your needs. Evapolar spreads cool air evenly in the same way as air is cooled in natural conditions.

Your own personal climate has now
become a reality.



How do EVAPOLAR WORK?

Evapolar functionality is based on a natural evaporative cooling technology. After you fill the removable water tank and connect your Evapolar air conditioner to a power supply, the cartridge will absorb large amounts of water. The water then spreads evenly through the cooling pads. As the air blows through the pads, the water evaporates, which causes both the lowering of the air temperature with saturating it with water. Evapolar air conditioner will reach its full cooling power within 5-10 minutes. There is no heat exhausted as a result of the evaporation process.

The device works with any USB power supply and consumes only 10-12W.

Hot and
dry air



Wet and
cool air



Our patented technology makes it possible

The Evapolar evaporative technology is based on the unique nanomaterial EvaBreeze™ that we use in the evaporative pads.

Responsive care approach

EvaBreeze does not contain organic elements and prevents the spread of bacteria.

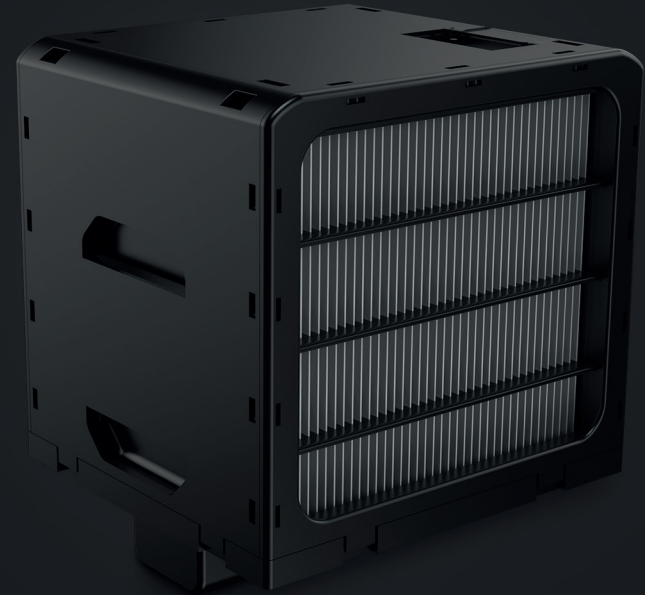
Saving energy

It has great hydrophilic capacity. Our evaporative pads provide intense water evaporation from the small surface of the cartridge.

The capillary effect raises the water up to a height of 30cm and saturates the whole area of the cartridge. You do not need the water pump that is essential for any other evaporative air coolers, as the water goes up within the cartridge pads naturally. You save energy and only use 10-12W.

Powerful cooling effect

Our devices work on a natural evaporative cooling principle. Using EvaBreeze™ allows us to drop the air temperature significantly and more efficiently than any old-school 'swamp coolers' can do. Our air conditioners powerfully cool your personal area while being 10 times smaller than conventional ACs.



World's first SMART personal air conditioner



evaSMART™ EV-3000

Designed to provide powerful personal air cooling experience.
It will shape your comfort and colour your life in a joyful and truly personalised way.



Up to 4 m² (33 ft²)

Cools personal area
up to 4m² (33 ft²)
around the user.



6-8 hours

Works up to 8 hours
from one water
supply.



3-6
months

Evapolar evaporative
cartridge needs to be
replaced at least once
every 3-6 months. Poor air
or water quality may
affect the cartridge
lifecycle duration.



4-15 °C
(39 – 59 °F)

Decreases outgoing
airflow temperature
by up to 15°C (59°F)
dependent
on humidity levels.
Works best in dry
and hot climates.

KEY FEATURES

evaSMART™



Cools the air

Uses a natural evaporative cooling principle to reduce air temperature.



Humidifies

Humidifies the air creating a better environment. Can be used in winter.



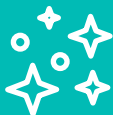
Smart Control

Use your voice to communicate with evaSMART through Smart Home systems and operate it from the Evapolar mobile app.



Portable

Works on a USB power supply. Can be run by using a powerbank or a wall outlet.



Purifies

Filters out dust particles to improve air quality for healthier breathing.



Efficient and Green

No toxic Freon-like liquids, consumes only 12W. Uses fully biodegradable evaporative pads.



LED lights

Adjust a colour of the LED lights to your interior or your mood with a help of colour playlists.



Responsive Care

EvaBreeze™ carries no organic materials, so it won't harbour disease-causing bacteria.

SMART HOME

integration

Use voice commands while performing other tasks. Hands-free.

evaSMART works great with Amazon Alexa. With a voice control, you can turn on and off evaSMART, change a desired power of cooling, choose different colours for LED lights and adjust their brightness. evaSMART can even tell you the humidity level in the room, the room temperature and the temperature of the outgoing air. More features available through Smart Home systems will be added to the next updates.

Integration with Google Home, Samsung Smart Things and Apple Home Kit is coming soon.



Amazon Alexa



Google Home



Smart Things



Apple HomeKit

SMART CARTRIDGE

usage

Don't miss the expiry date of your cartridge. Healthy air is essential.

We equipped evaSMART with a smart microchip that monitors the lifespan of your cartridge. When the cartridge expands evaSMART LED lights turn red to remind you to change a cartridge.

In the mobile app, you can also monitor how much of the cartridge you have used. Push-notifications will remind you to change a cartridge when needed.



MOBILE APPLICATION

control



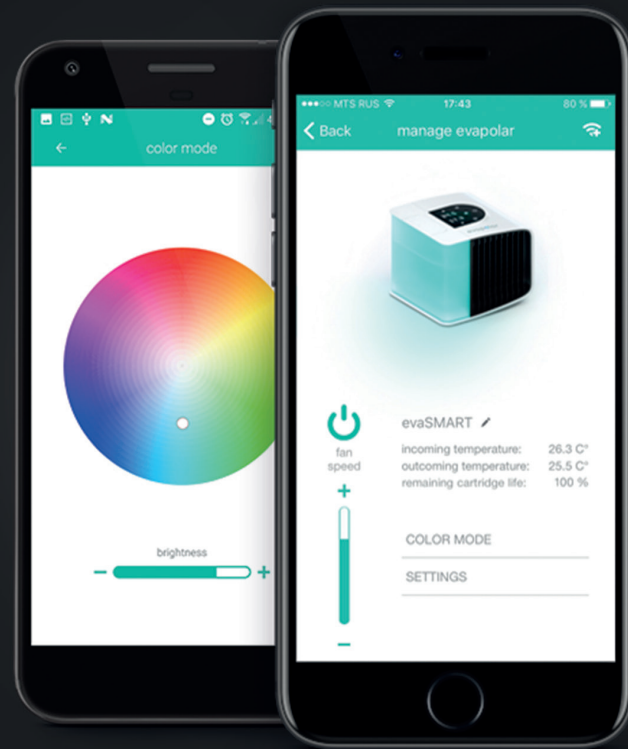
Evapolar App
evapolar Ltd.

Create a personal comfort zone
right from your smartphone

A full list of evaSMART features and almost all settings are now accessible remotely with the help of our Evapolar mobile application. Available for iOS & Android users.

You can control a network of your evaSMART air conditioners from your smartphone; turn them on and off, adjust the cooling power, and more.

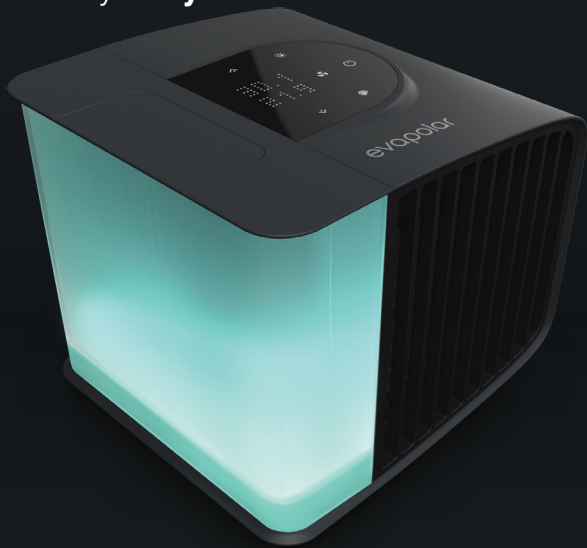
Sleeping mode and colour playlists are coming in the next update.



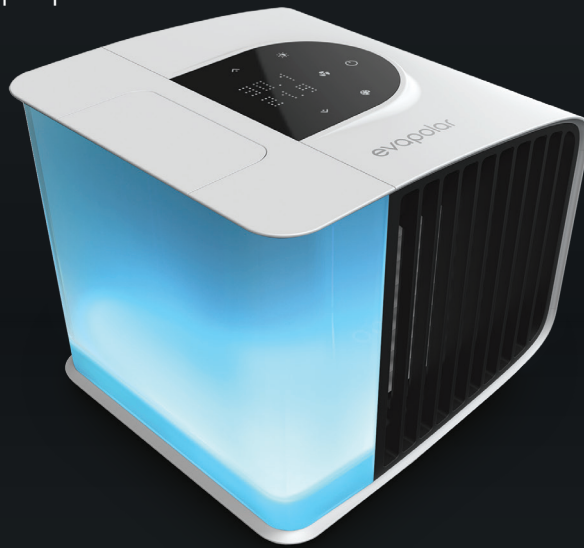
stylish INTERIOR ACCESSORY

evaSMART comes in three colours: Opaque White, Coal Black, and Stormy Grey. You can create numerous looks for your device by changing its LED lights to any colour of your wish. evaSMART can become a bright, stylish piece for any interior, whether it is an office space, a bedroom or a living area.

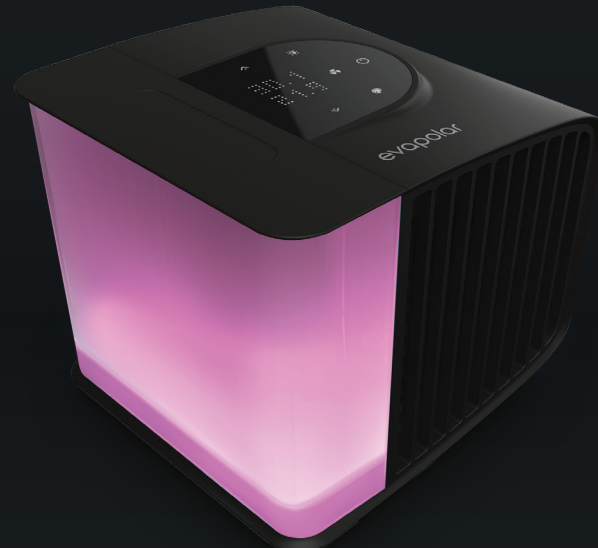
Stormy **Grey**



Opaque **White**



Coal **Black**



Evapolar air conditioners

PRODUCT LINES

evaLIGHT™ EV-1000

Coverage Area	Up to 3.5 m / Up to 30 ft
Power Consumption	10W
Size	170 x 171 x 174 mm / 6.69 x 6.70 x 6.87 inch
Net Weight	1300g
Water Tank Capacity	750 ml
Water Refill Cycle	every 3-5 hours
Evaporative cartridge life expectancy	3 - 6 months*
Color	Opaque White Coal Black Royal Blue
Energy Efficiency Ratio (EER)	21-37
Power Supply	Micro USB (5V; 2A)
Wi-Fi connection	n/a
Smart Home	n/a

evaSMART™ EV-3000

Coverage Area	Up to 4 m ² / Up to 33 ft
Power Consumption	12,5W
Size	184 x 217 x 207 mm / 7.24 x 8.54 x 8.14 inch
Net Weight	1820g
Water Tank Capacity	1300 ml
Water Refill Cycle	every 6-8 hours
Evaporative cartridge life expectancy	3 - 6 months*
Color	Opaque White Coal Black Stormy Grey
Energy Efficiency Ratio (EER)	21-37
Power Supply	USB Type C (5V; 2A)
Wi-Fi connection	✓
Smart Home	✓



Evapolar has now brought to the global market two innovative devices for personal microclimate cooling systems: EV-1000 and EV-3000. We keep developing our product lines. More exciting solutions for personal microclimate are on the go.

*Poor air and/or water quality may affect the cartridge life expectancy.

LET'S TALK

Still have questions?

For questions and other media queries
send an email to Ksenia Shults,
Head of PR and Communications at Evapolar

kshults@evapolar.com

www.evapolar.com

©September 2017 Evapolar Ltd.

This guide can be used for informational purposes only. All rights reserved.